

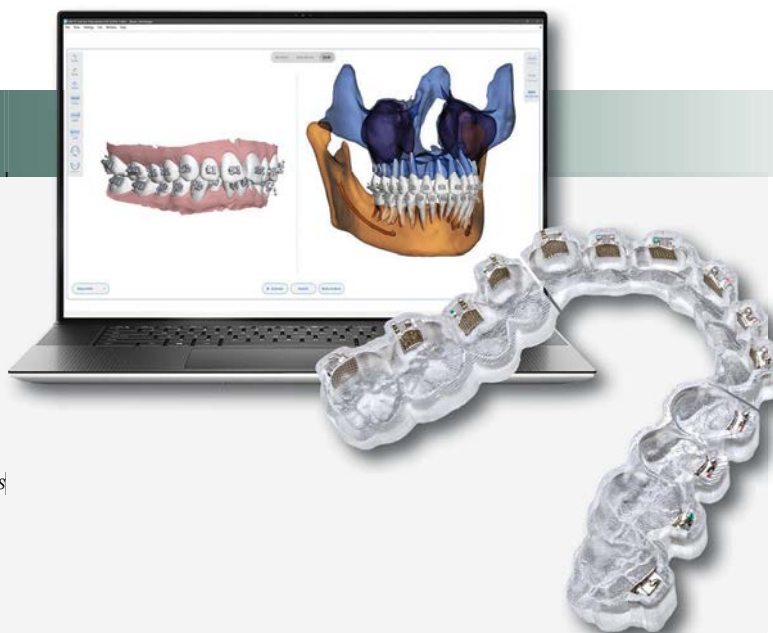
ORTHODONTICS

DIGITAL INDIRECT BONDING

OrthoSelect: DIBS AI

The patented, award-winning DIBS AI software simplifies and automates the process of case setups, creates predictive outcomes based on any bracket prescription, and delivers accurate and affordable 3D-printed IDB trays for precision bracket placement. These advancements free up valuable chair time by shortening bonding appointments and reducing overall treatment time.

Information: 801-763-5039 or dibsai.com



ARCH WIRES

American Orthodontics

American Orthodontics' wire portfolio offers several options to best fulfill treatment goals. Tanzo Premium Heat-Activated, Iconix Aesthetic Wire and NT3 Superelastic all provide excellent quality. Tanzo delivers consistent unloading forces that allow controlled tooth movement for predictable results. Available in mid- and low-force levels, Tanzo is resilient with excellent resistance to permanent deformation.

Information: americanortho.com

BONDING: SELF ETCHING PRIMER

Solventum: 3M Transbond Plus Self-Etching Primer

3M Transbond Plus Self-Etching Primer is an easy, one-step system featuring unique chemistry that allows you to etch and prime enamel in one timesaving step. It provides consistent and reliable strength for ortho bonding when used with light-cure adhesives.

Information: solventum.com



ORTHODONTICS

BONDING: TRADITIONAL PRIMER

Reliance Orthodontic Products: Assure Plus

Assure Plus allows clinicians to successfully bond to gold, amalgam, stainless steel, composite, acrylic temporaries, lithium disilicate, porcelain, and zirconia—all with one product. It also successfully bonds to wet or dry normal or atypical enamel. The ability to reduce variables seen or unseen makes it a smart choice in any bonding situation. Available in a 6 ml squeeze bottle or single-dose caplets.

Information: relianceorthodontics.com



BRACKETS: CERAMIC TWIN

Solventum: 3M Clarity Advanced Ceramic Brackets

Clarity Advanced Ceramic Brackets offer a small, low-profile design with exceptional strength and aesthetics. Their smooth, comfortable edges and reliable, predictable debonding make them a trusted choice for patients seeking discreet treatment without compromising performance.

Information: solventum.com

BRACKETS: METAL TWIN

American Orthodontics: Mini Master Series Brackets

Mini Master brackets are part of a versatile, metal twin system orthodontists around the world have trusted for more than 30 years. Combining diagonal torque and diagonal angulation, Mini Master brackets' patented design dramatically increases bonding precision, leading to fine results with fewer bracket repositions and wire bends.

Information: americanortho.com



ORTHODONTICS

CLEAR ALIGNER SYSTEMS

Align Technology: Invisalign System

The Invisalign clear aligner system straightens teeth and treats malocclusions with custom-made, removable, clear aligners, combining virtual modeling software and patented SmartTrack aligner material.

Information: 800-577-8767 or invisalign.com



DIRECT BOND MOLAR TUBES

American Orthodontics

iFit tubes from American Orthodontics are the ultimate combination of functionality, convenience, and patient comfort. Featuring a near-horizontal hook orientation, centered funnel entrance, enhanced bond strength and fit, and an ultra-low profile, the iFit family of tubes is the result of dedication to innovation.

Information: americanortho.com



ELASTICS AND ELASTOMERICS

American Orthodontics

The Wildlife Series elastics are crafted from premium latex tubing with optimal thickness for reliable performance. A proprietary cutting process ensures precise dimensions and consistent force delivery. For patients requiring non-latex options, American Orthodontics maintains a latex-clean environment equipped with an independent air and ventilation system to eliminate any risk of cross-contamination.

Information: americanortho.com



ORTHODONTICS



BANDS & ATTACHMENTS

American Orthodontics

American Orthodontics' award-winning products, such as MRI bands, buttons, buccal tubes, closed- and open-coil springs and memory chain, combine the quality and performance that orthodontists have relied upon for decades. American Orthodontics is focused on the orthodontic specialty with relentless innovation and continuous improvement.

Information: americanortho.com

IMPRESSION MATERIALS: ALGINATES

**Kromopan USA: Kromopan/
KromopanSil**

Kromopan makes taking impressions simple with the introduction of the color-changing indicator. It offers 168 hours of dimensional stability, so there's no rush to pour the impression. It is adaptable to different techniques and has diverse clinical case applications. With a high degree of elasticity and accuracy, Kromopan offers enough working time as well as the shortest time in the mouth for the comfort of patients.

Information: 800-841-7398 or kromopanusa.com



**CLOSE
RACE**

*Won by 1
write-in vote*



BRACKETS: SELF-LIGATING METAL

**American Orthodontics:
Empower 2 Self-Ligating
Brackets**

Empower 2 Self-Ligating Brackets deliver the performance orthodontists need with features that enhance the bracket's strength and dependability. The Empower family includes bracket and system options that allow users to treat patients their own way. This includes a fully interactive system, fully passive system, or combination dual-activation system.

Information: americanortho.com

ORTHODONTICS

FIXED CLASS II & III DEVICES

Solventum: 3M Forsus Class II Correctors

The 3M Forsus Class II Correctors feature a simple one-step installation into the headgear tube that includes a telescoping coaxial spring designed to allow for enhanced patient jaw opening. The comfortable stainless steel mechanism does not bow out into the cheek and has low spring stresses to give the Forsus spring a longer, more fatigue-resistant life.

Information: solventum.com



LABORATORY – ORTHODONTIC

AOA Laboratory

AOA is a full-service digital orthodontic laboratory with more than 40 years of experience supporting dental professionals nationwide. It's known for creative appliance designs, exceptional customer service, and extensive orthodontic expertise. AOA partners closely with clinicians to deliver customized appliances and innovative solutions, blending creativity, technology, and practitioner preferences to elevate patient care.

Information: 800-262-5221 or aolab.com

AOA

IT'S A
TIE



Specialty Appliances

As the nation's largest orthodontic lab, Specialty Appliances is trusted for exceptional quality, responsive customer service, and reliable on-time delivery. They are a full-service lab offering advanced 3D-printed appliances, MARPE appliances, aligners, and more, backed by innovation, expertise, and consistent clinical results.

Information: specialtyappliances.com

ORTHODONTICS

ORTHODONTIC COMFORT SOLUTIONS

Reliance Orthodontic Products: Reliawax

Reliance Orthodontics now offers wax-like intraoral protection in a syringe. Reliawax is a new light-cure gel in a syringe. Controlled application is achieved with perfect gel viscosity and effective needle syringe tip. Crystal clear, soft, pliable, and durable when cured, Reliawax stays in place between appointments with easy clinical removal.

Information: relianceorthodontics.com



ORTHODONTIC HAND INSTRUMENTS

HuFriedyGroup

Orthodontic instruments from HuFriedyGroup, led by the Clear Collection instruments for clear aligners, are forged from high-quality stainless steel. An optimal blend of chromium and carbon ensures instruments that resist corrosion, given proper use and care. They are hand-finished to a satin luster with a nonglare surface.

Information: 800-483-7433 or hufriedygroup.com

TEMPORARY ANCHORAGE DEVICE

Ormco Corporation: VectorTAS

The Vector Temporary Attachment System (VectorTAS) is a coordinated system of miniscrews, attachments, and instruments designed to facilitate a wide range of orthodontic movements using simple mechanics without requiring external devices. After implantation, the screw can be attached to coil springs and crimpable posts, which provide the force vectors to move teeth.

Information: 800-854-1741 or ormco.com

